



Werkbezoek CRO Rotterdam

Jordi Verspeek

Luchtverkeersleider
Rotterdam

Teammanager Operations

lvnl.nl



Organisatie

- Zelfstandig Bestuursorgaan (sinds 1993)



1000

medewerkers
(350 operationeel)

250

verkeersleiders

20

verkeersleiders
Rotterdam

499.446

Vliegbewegingen
Schiphol

53.322

Vliegbewegingen
Rotterdam

6500 km³

Luchtruim Rotterdam

Wettelijke taak



Verlenen van
luchtverkeersdiensten



Verlenen van communicatie-,
navigatie- en
plaatsbepalingsdiensten



Verlenen van
luchtvaartinlichtingendiensten



Uitgeven van
luchtvaartkaarten en -
publicaties



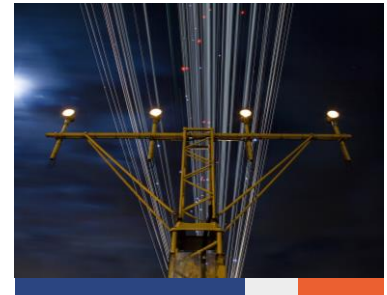
Verzorgen van opleidingen



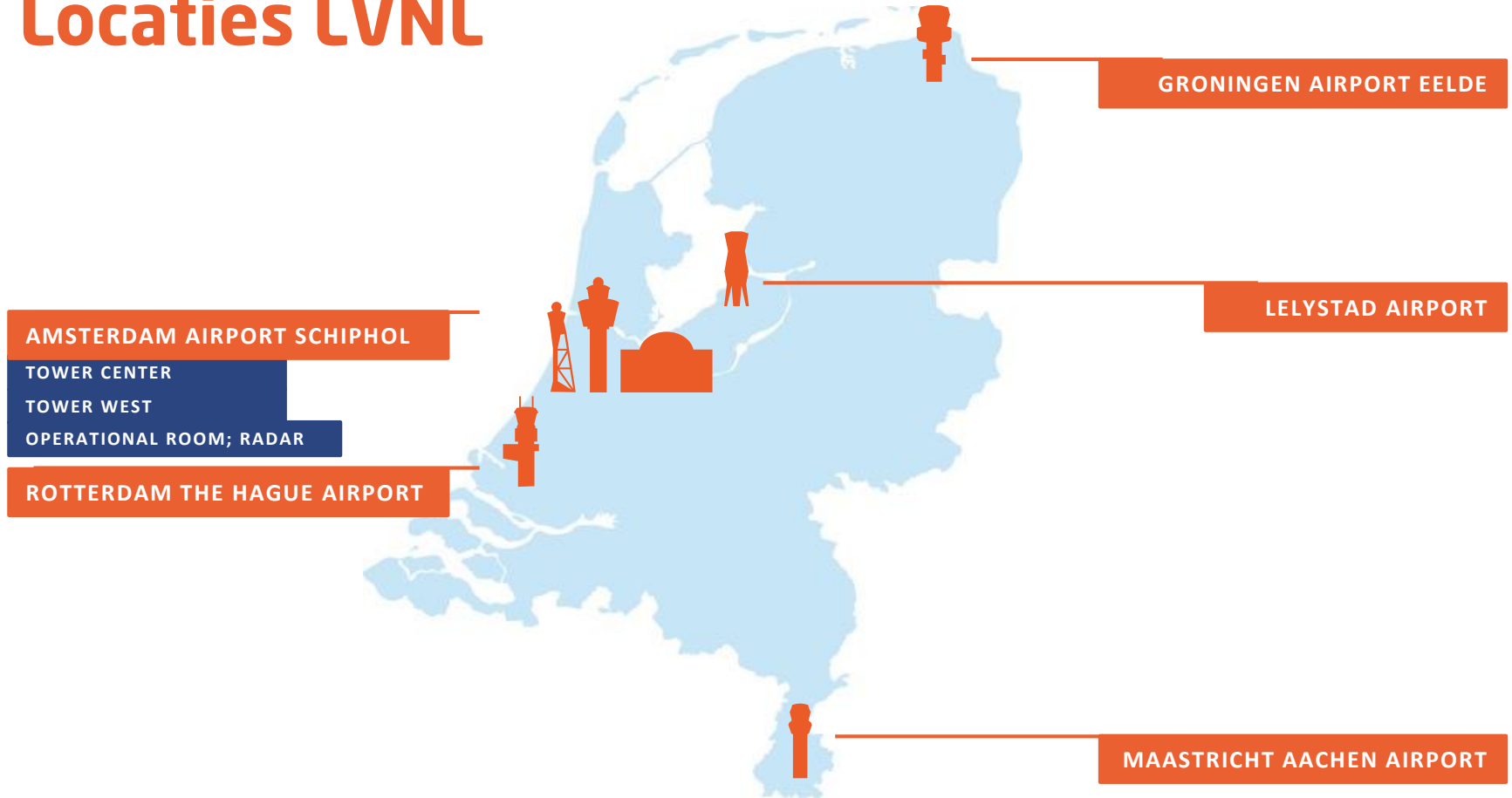
Doen van voorstellen t.a.v.
heffingen



Advisering aan minister



Locaties LVNL





OPERATIONAL ROOM; RADAR



TOWER/APPROACH

of

AREA CONTROL

Luchtruim

4. EURO CONTROL

VANAF 7,5 KM

3. AREA CONTROL

TOT 7,5 KM

2. APPROACH CONTROL

VERTREKKEND & NADEREND

1. TOWER

LOKAAL



Rotterdam Control Zone (CTR)

Vanaf grond

Visueel

Luchthaventerrein

Starten & landen

VFR-verkeer



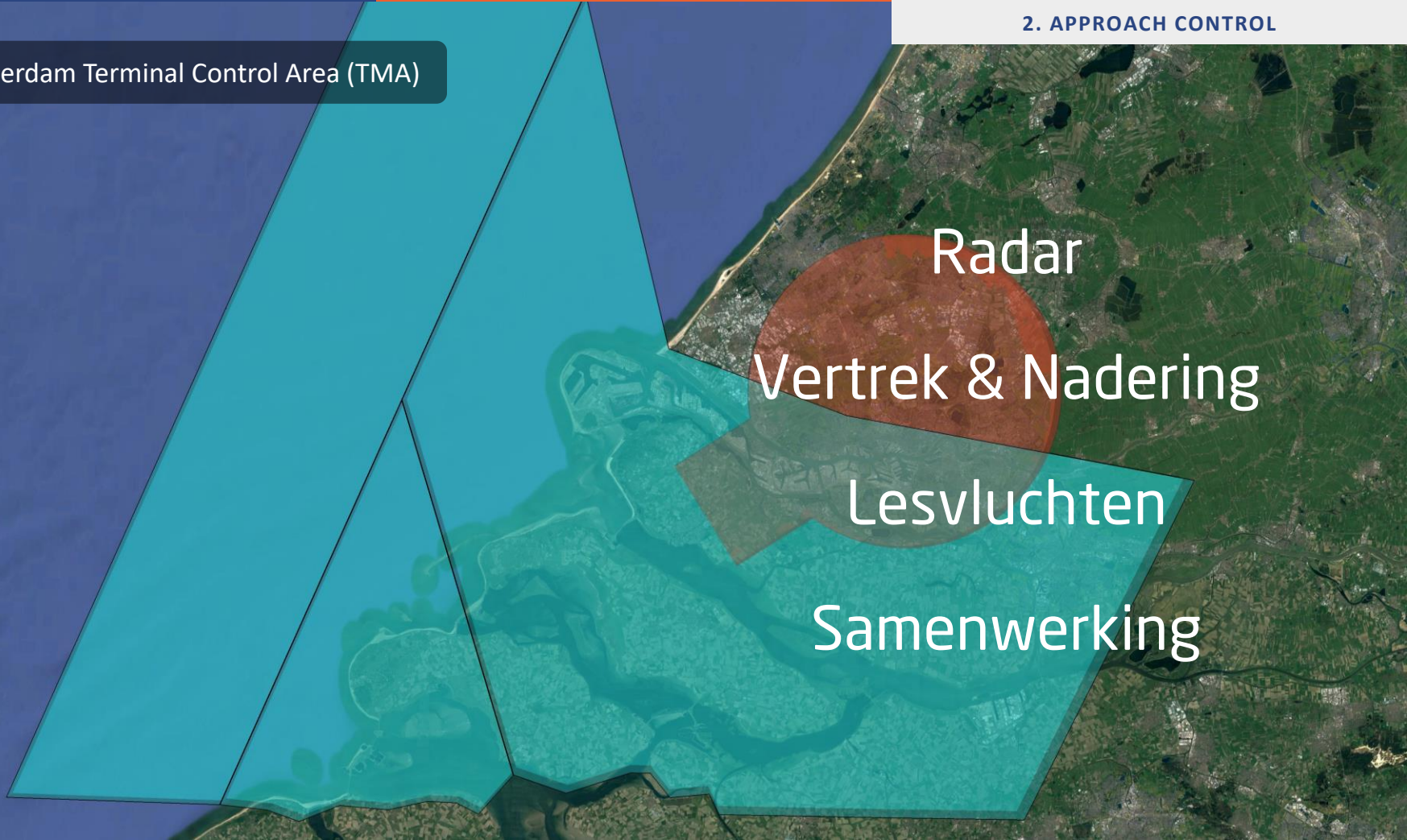
Rotterdam Terminal Control Area (TMA)

Radar

Vertrek & Nadering

Lesvluchten

Samenwerking



1. TOWER

Schiphol Control Zone (CTR)



Twee torens
Piekmomenten
Ground Control

Schiphol Terminal Control Area (TMA)

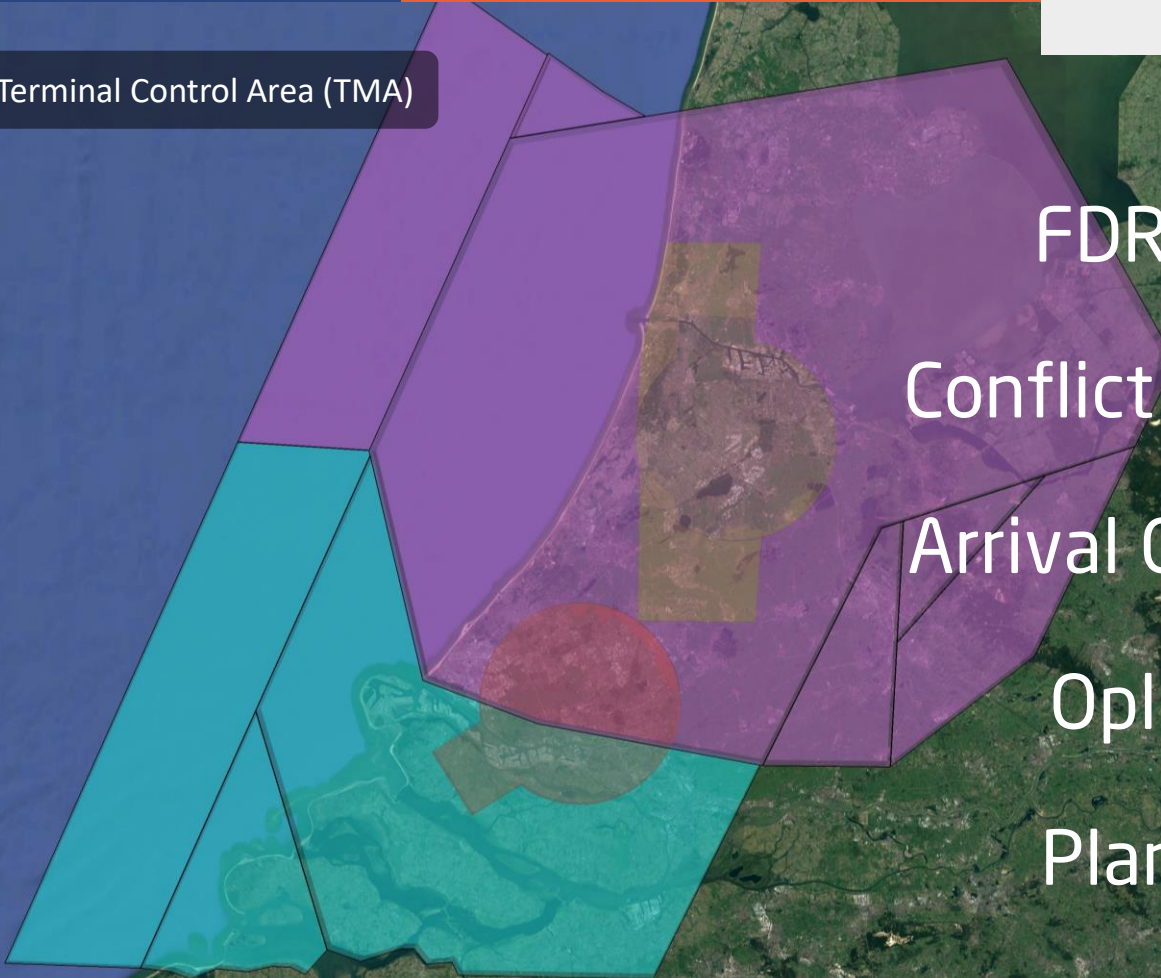
FDR/DCO

Conflict oplossen

Arrival Controller

Oplijnen

Planning



Snelwegen


5 sectoren

Holdings

Landsgrenzen

Eurocontrol

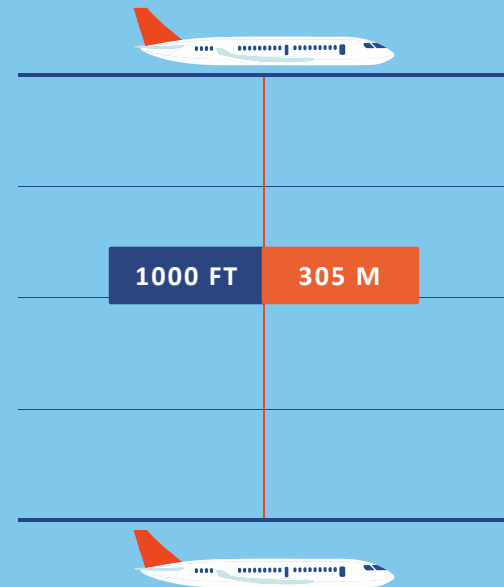
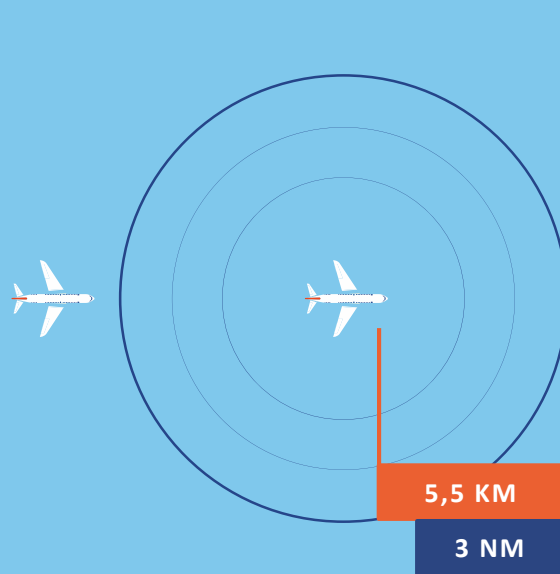
Amsterdam Control Area (CTA)

An aerial photograph of the Amsterdam region, including the city and surrounding areas. The map is overlaid with a semi-transparent grey layer that is divided into five distinct sectors by black lines. The sectors are roughly rectangular or polygonal in shape, covering the land area around the city. The text 'Amsterdam Control Area (CTA)' is written in white on a dark grey background in the top right corner. On the left side, there is a vertical list of terms: 'Snelwegen', '5 sectoren', 'Holdings', 'Landsgrenzen', and 'Eurocontrol', all in white text.



Separatie

- Visueel
- Procedureel
- Radar



Meteo

- Wind
 - Tegenwind
 - Crosswind
- Wolken
- Zicht
- Buien



TOPPA 2R

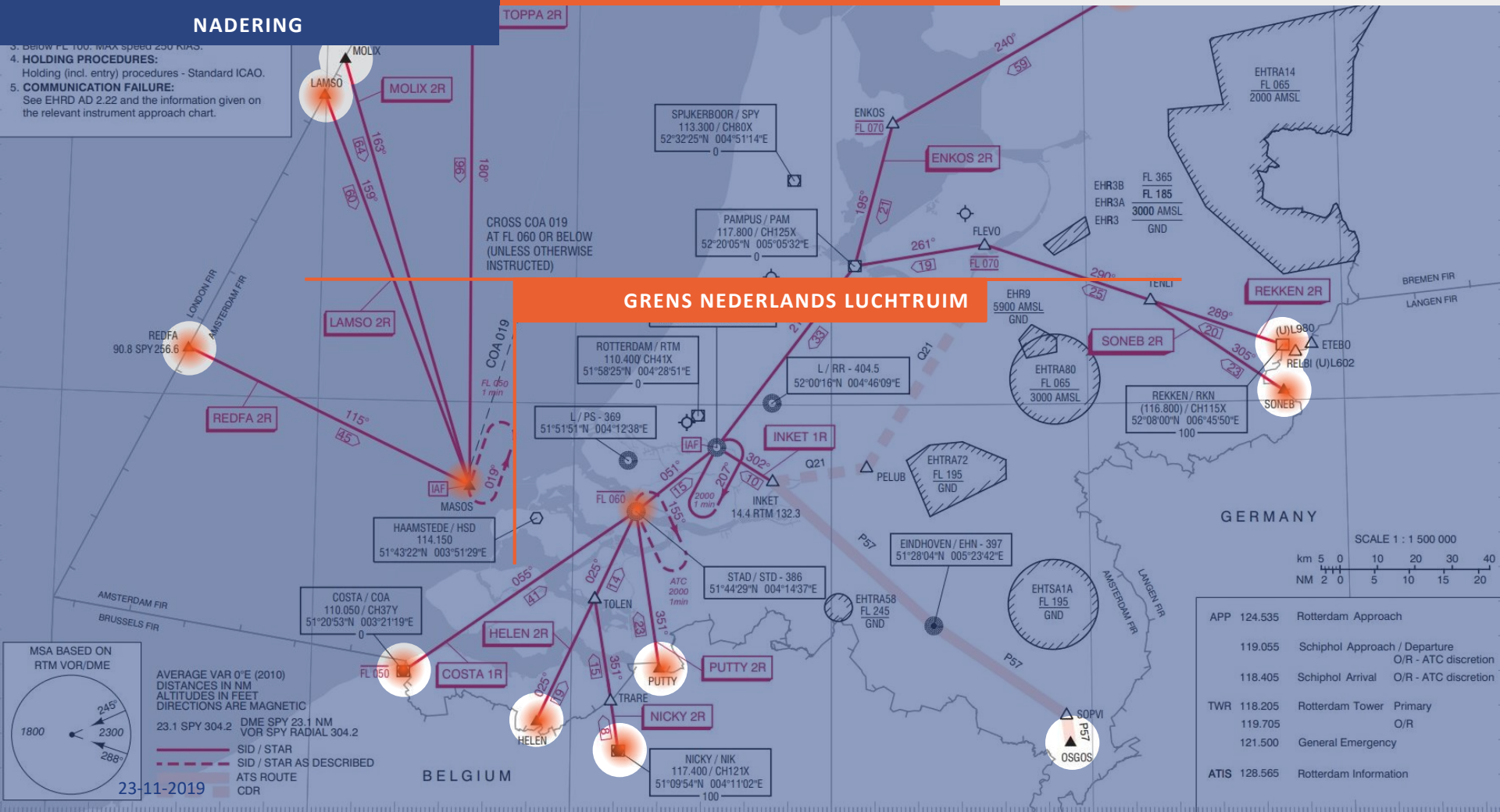
4. HOLDING PROCEDURES:

4. HOLDING PROCEDURES:

Holding (incl. entry) procedures - Standard ICAO.

5. COMMUNICATION FAILURE:

See EHRD AD 2.22 and the information given on the relevant instrument approach chart.



APP	124.535	Rotterdam Approach	
	119.055	Schiphol Approach / Departure	O/R - ATC discretion
	118.405	Schiphol Arrival	O/R - ATC discretion
TWR	118.205	Rotterdam Tower	Primary
	119.705		O/R
	121.500	General Emergency	
ATIS	128.565	Rotterdam Information	

NADERING

- Vanaf wachtgebied

- Vectors

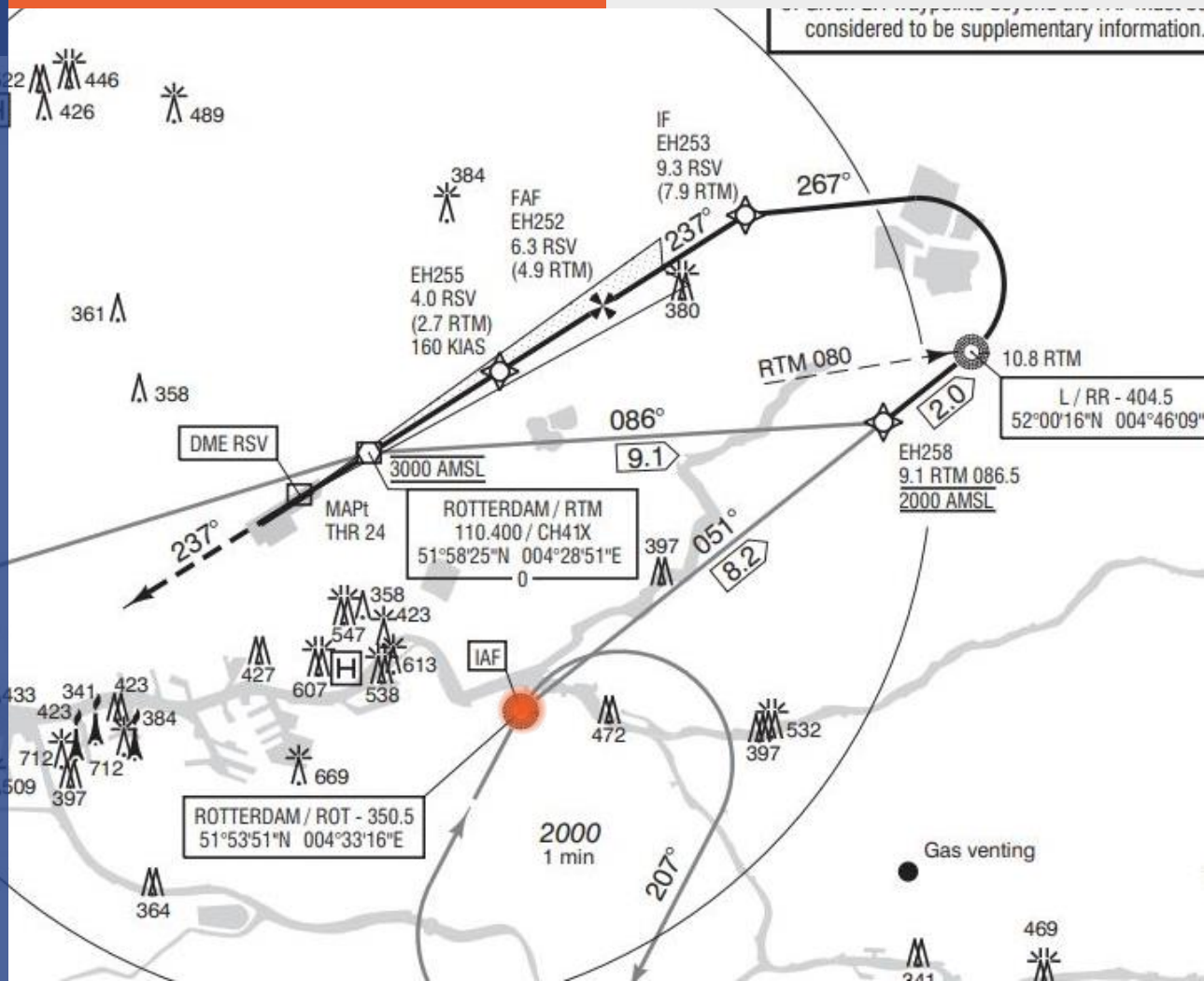
Rechte lijn

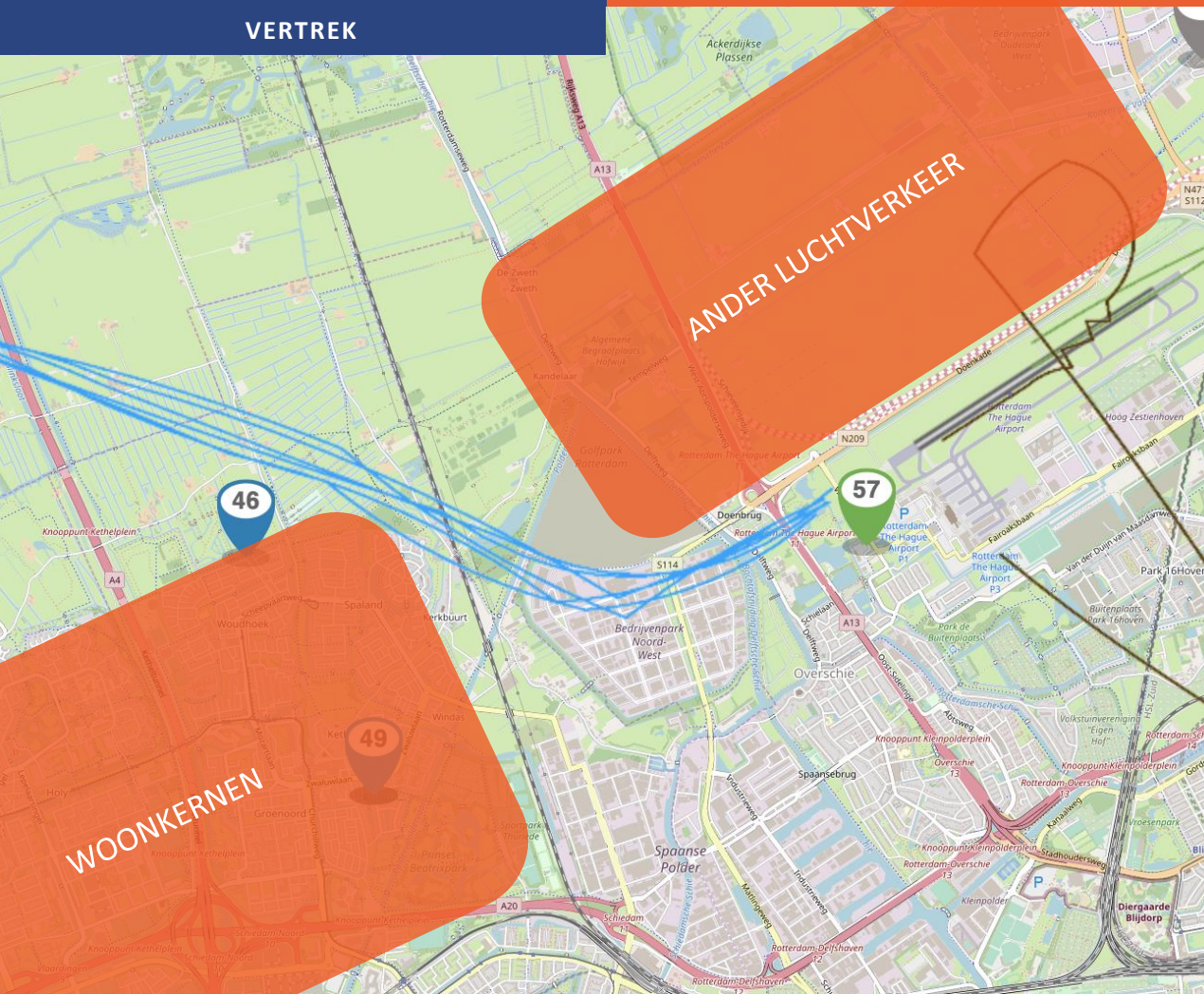
Stabiele nadering

TM 252
OM MASOS

L / PS - 369
51°51'51"N 004°12'38"E

23-11-2019





- Tot 3000 voet (915 m)
- Oprit naar snelwegen
- Veiligheid
- Omgeving

